



REFLECTING
stewardship

BENEDICTINE ANNUAL REPORT 2022



stewardship

LIVING WITH *purpose*

Benedictine associates put care and love into action through thoughtful and purposeful management of our God-given resources.



PRAYER

Loving God,

You have entrusted to our care many gifts: the gift of the earth and its natural resources, our material gifts, our talents and abilities, and the gift of other people to share our lives and our work.

Help us to become good stewards of all these gifts and to be a blessing to one another through sharing our talents, gifts, support and love generously.

We ask this in Jesus' name, Amen.



LETTER

Dear Friends,

The last time that our Core Value of Stewardship was a focus for us was in 2018. So much has changed since then in our communities, our country and our world. We are grateful for our traditional Benedictine values and heritage that have helped us stay grounded and steadfast in our mission, providing a guiding light that illuminates the ever-changing path ahead. In 2022, we illustrated this Core Value of Stewardship in varying and amazing ways across our organization.

Most people think Stewardship is merely limited to financial or natural resources. While these are vital components of this Core Value, Benedictine demonstrated a much deeper and broader understanding. For us, Stewardship also means being a good steward of time, knowledge, heritage, values, supplies, donors, community and human resources. It is also about caring, which entails not only passive concern but also deliberate action to ensure the best use and conservation of the many gifts we possess. It is a loving response of gratitude for our countless blessings as humans, including the blessing of the meaningful work we have been called to do. At Benedictine, we have been blessed with the opportunity to touch so many lives through helping our associates, residents and their families live with purpose.



LETTER

Every week during 2022, a Benedictine associate wrote a reflection on the meaning of Stewardship, providing a unique perspective on what Stewardship means personally to them. These reflections were shared with associates throughout the organization, providing many of us with inspiration and examples of how our values are lived every day. This annual report further shines a spotlight on how “living Stewardship” takes center stage at Benedictine. The apostle Peter’s emphatic call to all of us—“As each one has received a special gift, employ it in serving one another as good stewards of the manifold grace of God” (1 Peter 4:10)—resonates across our communities to this day.

We remain committed to the thoughtful, purposeful management of our God-given resources. We also work to enhance efficiencies and fiscal responsibility in our organization while providing the highest quality care and services, engaging living communities and doing truly meaningful work. This endeavor includes deep appreciation for our residents and their family members, our dedicated associates, our donors,

governance members and Ministry Partners who advance our Mission and enable us to better the lives of those we serve. Words alone simply cannot describe how much we appreciate you.

In peace and sincere gratitude,



Jeffrey Garland, MD
Board Chair
Benedictine



Sister Beverly Raway, OSB,
Prioress
St. Scholastica Monastery



Jerry Carley,
President/CEO
Benedictine

BENEDICTINE COMMUNITY HIGHLIGHTS 2021-2022

July 2021

Benedictine refinanced \$132.4M in debt and reduced its average coupon rate from 3.80% to 3.50%. The refinancing enabled Benedictine to borrow an additional \$10M for routine capital expenditures across its campuses. Despite this debt increase, annual debt service decreased \$2.0M+ facilitated by debt structuring.

August 2021

Benedictine encouraged associates to protect their health and those around them with a COVID-19 vaccine competition. Participating associates were entered into an overall drawing for cash prizes. In addition, the top two communities with the highest percentage of fully vaccinated associates received organization-wide recognition and a community-wide meal.

September 2021

To protect the health of our associates and residents during the COVID-19 pandemic, the in-person **Benedictine Annual Conference in Duluth, MN** was cancelled. Instead, funds earmarked for the conference were given to each Benedictine community to use for associate appreciation.

Catholic Health World's article "Require vaccinations or just encourage them? Systems are split on decision" featured Kathleen Murray, training and development manager, sharing how Benedictine was encouraging COVID-19 vaccination through education and friendly competition.

October 2021

Catholic Health World's article "Intractable staffing challenges make it difficult to respond to surges" Featured Jerry Carley, Benedictine president/CEO, who discussed the difficulty senior care organizations face in competing with hospitals for staff. These staffing challenges, at times, are so severe that hospital patients cannot be discharged to senior care settings.

Sharing industry best practices is one way the team from **Benedictine Living Community-Winona, MN** is living the Mission. In collaboration with Erin Washington, co-founder of Embodied Labs, Dr. Neal Buddensiek, Benedictine chief medical officer, and Kim Nahrgang, staff development director, training instructors Dawn Selleck and Jenna Barkeim presented "Virtual Reality: Changing the Way Caregivers Learn" at the LeadingAge Annual Meeting and Expo in Atlanta, GA. The team shared how they have used virtual reality to accelerate staff education, enhance caregiver understanding of aging and create greater empathy for those with dementia and other memory related issues.

BENEDICTINE COMMUNITY HIGHLIGHTS 2021-2022



November 2021

U.S. News & World Report's 2021-2022 Best Nursing Home report recognized nine Benedictine communities that earned the highest possible rating in the country:

Short-term rehabilitation

Minnesota

Duluth	Shakopee
New Brighton	St. Peter
Owatonna	Winona
Red Wing	

Long-term care

Minnesota Wisconsin

Ada	LaCrosse
New Brighton	
St. Peter	
Shakopee	

December 2021

Benedictine offered three communities in response to the call to serve as hospital decompression sites as part of Minnesota Governor Tim Walz's action plan to relieve hospitals overwhelmed by those requiring COVID-19 care. **Benedictine St. Gertrude's in Shakopee, Cerenity Senior Care-Marian of St. Paul, and Benedictine Living Community-Regina** opened their doors to help.

After partnering for seven years, **Benedictine Living Community-Duluth, MN** (BLC Duluth) acquired Hearthstone Home Care effective December 1. The newly formed Benedictine Home Health provides in-home physical, occupational and speech therapy services to clients at BLC Duluth and in the broader Duluth area.

February 2022

Jerry Carley, Benedictine president/CEO, elected chair-elect of LeadingAge Minnesota. LeadingAge Minnesota is the state's largest association of organizations serving older adults.

March 2022

The School Sisters of Notre Dame announced on March 14 that an estimated 111 sisters would move from their location at the Our Lady of Good Counsel campus in Mankato to **Benedictine Living Community-Shakopee, MN**. The moving process was scheduled to start in September 2022.

BENEDICTINE COMMUNITY HIGHLIGHTS 2021-2022



April 2022

After 146 years of service, advocacy, community, presence, and worship at the Ruma Center in Ruma, IL, the **Sisters of the Adorers of the Blood of Christ (ASC)** relocated 37 Sisters to **Benedictine Living Community-At The Shrine, Belleville, IL.**

Sister Vicki Bergkamp, regional leader of the U.S. Region of the Adorers, noted, “We believe Benedictine offers the space and atmosphere for our sisters to engage in prayer, presence and mission with and among the current residents.”

May 2022

Nazareth Living Center, St. Louis, MO, concluded its 150th Anniversary Celebration with a Mass on May 7 with The Most Reverend Mitchell Rozanski, Archbishop of St. Louis, presiding.

Unified Leadership Team members gathered for the **Spiritual Renewal** at Sugar Lake Lodge in Grand Rapids, MN. The Spiritual Renewal is a time for Benedictine leaders to reflect on and renew their calling for the Benedictine health care ministry.

Sister Beverly Raway, OSB, prioress of St. Scholastica Monastery, and the Benedictine mission integration department led the sessions.

Benedictine Living Community-Crookston, MN launched Cycling Without Age program with 16 associates training to be trishaw pilots with trainer Jake Krohn. The trishaw is a modified two-person carriage in front of a bike rider. Benedictine Crookston was able to purchase the trishaw with a matching grant of \$6,200 from the Minnesota Department of Human Services.

June 2022

The **Benedictine Annual Report 2021, You Cared For Me,** was recognized with a 2022 Gold Aster Award. The Aster Awards recognize outstanding quality in health care advertising, marketing, and communications from across the nation.

BENEDICTINE ASSOCIATES LIVING THE CORE VALUE OF STEWARDSHIP



Daphne Sardegna

Daphne Sardegna is an invaluable part of **Benedictine Living Community-Winona, MN**. Many residents, staff and family members compliment her amazing work ethic and positive attitude. She always puts in extra effort without being asked and without seeking recognition. When a resident was dealing with some health issues that required extra assistance from housekeeping, Daphne helped her in a way that maintained her dignity. She demonstrated care, kindness and compassion. Later, Daphne checked on the resident to ensure she did not need any more assistance before Daphne left for the day.



Liz Holmberg

Liz Holmberg, wellness coach at **Benedictine Living Community-Rochester, MN**, is a living example of the Core Values. Her colleagues praise her positive attitude, work ethic and dedication to residents. She knows each of them by name. Liz puts in 110 percent in everything, even filling in for culinary services with a smile on her face. Liz never complains, and she willingly picks up dirty meal trays as well as any debris from the floor to make the community look nice. In addition, she ensures Benedictine Living Community-Rochester looks festive with holiday decorations and resident crafts.

BENEDICTINE ASSOCIATES LIVING THE CORE VALUE OF STEWARDSHIP



Mollalegne Tegengne

For 19 years, Mollalegne “Molla” Tegengne has been a certified nurse assistant at **Cerenity Senior Care-Humboldt, St. Paul, MN.** His personality, drive, hard work and fresh attitude are contagious and have gained him respect and admiration from fellow associates, residents and their families. Molla is always willing to assist, educate and mentor other associates. His colleagues have commented, “It is a good day when ‘Molla’ is on the schedule.”



Terry Clark

For an impressive 32 years, Terry Clark has consistently gone above and beyond in her care for the residents as a health unit coordinator at **Benedictine Living Community-Minneapolis, MN.** While her job description does not include cutting hair, making peach cobbler for a resident’s birthday, escorting residents to the hospital or coming in on a weekend to lead worship for the residents, she humbly serves in these ways. Terry does not seek recognition; she just cares for the residents.

BENEDICTINE ASSOCIATES LIVING THE CORE VALUE OF STEWARDSHIP



Ivy Bicknese

Described as hospitable, respectful, positive and kind-hearted, Ivy Bicknese consistently demonstrates Stewardship in her endeavors. As a certified nurse assistant/certified medication aide at **Benedictine Living Community-Garrison, ND**, Ivy has touched the hearts of everyone she serves over the past four years. She is always looking for ways to improve and maintain the quality of care. Ivy comes in on her days off to do crafts with residents and attend funerals. A native of the Philippines, she recently organized a heritage event to educate the community on the Philippines and its culture.



Karen McClanahan

Karen McClanahan, physical therapy assistant, puts love and care into action in her daily work at **Benedictine Living Community-St. Joseph, MO**. She listens with the ear of her heart to make each resident's stay special. Once, a vegetarian resident spoke about her quiche recipe. Unprompted, McClanahan made the recipe and brought it in for the resident to enjoy. Karen ensures the therapy section is always clean and that regardless of the situation, each person has the equipment needed when they get discharged.

BENEDICTINE ASSOCIATES LIVING THE CORE VALUE OF STEWARDSHIP



Anthony Schmit

At **Benedictine Living Community-Owatonna, MN**, Anthony Schmit has been described as having a servant's heart, always ready to serve and going the extra mile for both residents and staff. Six years ago, he began working as a registered nurse, always putting the residents' needs first. Anthony sets a daily example of Stewardship and kindness in action. His colleagues call him the ultimate team player for his willingness to help and serve.



Carol Volp

All residents know and love Carol Volp. A resident assistant at **Benedictine Living Community-Osseo, MN** since 1998, Carol will often pause in her busy day to listen, answer a question, and to make someone new feel welcome. She regularly goes above and beyond by taking on additional duties not spelled out in her job description. Even when needing to take some personal time off, she made sure her residents received the care they needed.

BENEDICTINE ASSOCIATES LIVING THE CORE VALUE OF STEWARDSHIP



Amy Hamm

Amy Hamm, licensed practical nurse at **Benedictine Living Community-At The Shrine, Belleville, IL** consistently lives out the Core Value of Stewardship. For 20 years she has led by example and is always eager to help in any capacity. Amy epitomizes “going above and beyond” and “doing whatever it takes” to ensure residents receive quality care. She assists resident assistants, housekeepers and culinary staff when needed. She stepped up as an interim director of nursing (DON) for several months before training the new DON and ensuring a smooth transition.



Veronica O'Doherty

Since 1989, Veronica “Roni” O'Doherty, wellness director, has been a pillar of exceptional Stewardship at **Cerenity Senior Care-Marian of St. Paul, MN**. She ensures the building stays clean and organized. She has been seen scrubbing the activity kitchens or even cleaning scuff marks off the walls. She is known to come in on her days off to clean up the plants in the assisted living courtyard or scrub down the bus so residents have a clean ride. Roni's tireless work ethic and her dedication to Stewardship inspire the entire community.

BENEDICTINE ASSOCIATES LIVING THE CORE VALUE OF STEWARDSHIP



Francine Vater

Francine (Fran) Vater epitomizes Stewardship at **Benedictine Living Community-Winona, MN**. Fran is always willing to pick up shifts to ensure residents receive the care they deserve. Fran often comes in on her days off to train new associates. She devotes time every season and holiday to create crafts to hang on residents' doors. Regardless of how busy the day is, Fran doesn't take shortcuts. She consistently works hard and with attention to detail to make residents feel special.



Pamela Ecklund

During the COVID-19 pandemic, Benedictine associates were called upon to perform multiple roles, especially during outbreaks. Pamela Ecklund, a certified occupational therapy assistant at **Benedictine Living Community-Duluth, MN** for the past 20+ years, also served as nurse aide partner, COVID-19 test swabber and more when needed. She is hailed as the poster child for properly wearing personal protective equipment and following infection control precautions.

COMMUNITY BENEFIT

Each year, Benedictine works to plan and provide programs and activities that contribute to the common good in our communities. Community Benefit is a foundational element of who we are as an organization and is one of our most important and distinguishing characteristics as a Catholic health care ministry.

2022 was an unusual year due to the global COVID-19 pandemic. Despite this challenging situation that affected the organization, Benedictine provided \$17,337,145 in quantifiable community benefit programs and activities that served 22,633 individuals across the organization.

In 2003, Benedictine began consistent reporting of Community Benefit using the uniform standards for Community Benefit reporting developed by the Catholic Health Association. In the last 17 years, Benedictine has provided more than half a billion dollars in community benefits and served and more than 1.5 million people in our communities.

In 2022,

22,633

people were served
in our communities.

BENEDICTINE COLLABORATION

While Benedictine is primarily comprised of communities that are fully owned and managed, we are proud to partner with other organizations where we serve as partners. These Ministry Partners include the three Cerenity Senior Care communities, Nazareth Living Center and Villa St. Benedict.

MINISTRY PARTNERS

OPERATING REVENUE

2022: \$65,280

2021: \$65,938

2020: \$68,781

TOTAL ASSETS

2022: \$132,959

2021: \$133,869

2020: \$133,902

Dollar amounts in thousands.





foundation

FOUNDATION LETTER

A Deep Calling—A Deeper Passion

To Our Generous Donors,

As each year passes, our residents grow happier and more fulfilled because you've chosen to make a difference by making a gift. Like those of us who choose this work because of a deep calling, you choose to respond with kindness and generosity because of your deeper passion for the Mission and ministry of Benedictine. With each donation comes unprecedented gratitude from our residents, their families and the associates that care for them day in and day out. The difference our donors have made can be seen in new stained glass in a chapel, remodeled rooms, new wellness equipment, financial assistance for our residents and staff and entertainment that bring smiles to the faces of everyone in our communities. The difference you made can be seen and felt. The difference you made is breathtakingly beautiful.

With deepest gratitude,



Laurie M. Hennen
SVP, Foundation



Mary Tanner
Board Chair



FOUNDATION GIVING

What Your Generosity Does



\$3.4M+

raised to support our Mission and ministry

Donations of
\$1.2M+

upgraded critical infrastructure



\$129K+

transformed outdoor spaces

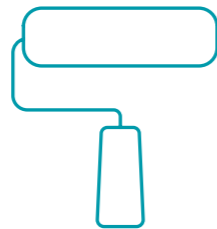


Helped **21** associates during a crisis with

\$23K+

in financial support

Refreshed **10** Benedictine Living Communities with updated furniture, rooms, skylights, flooring and paint



\$258K+

to keep residents in their Benedictine homes when they have outlived their financial resources and cannot fully pay for care and services



\$160K+

at **9** Benedictine Living Communities for resident care technology



FOUNDATION GIVING



What Your Generosity *Really* Does

A Nurse Call Light System for Benedictine Living Community-Crookston

In early July 2021, Sr. Carol Jean Schroeder, a resident at Benedictine The Summit at Benedictine Living Community-Crookston, MN, spent a week in the hospital with pneumonia. After returning home, when asked how the new call light system was working for her, she took the device in her hand and said, “This is really wonderful!”

Your kindness and generosity provide safety and comfort to the residents that call Benedictine home. Benedictine purchased this nurse call light system after raising over \$250,000 in donations.

FOUNDATION GIVING

Why Associates Give Back

It feels good to help make the place where I work better for everyone.

—Dawn, Rochester, MN

My residents have given so much of themselves, and I want to do the same. Sometimes we all need a little help.

—Kristy, Ada, MN

I enjoy blessing others with joy.

—Joleen, Northfield, MN

Through the all associate giving campaign, We Give 3-2-1, our associates gave over \$183,000 to support programs that enrich the lives of our residents and help our fellow associates in times of crisis. Contributions are made through PTO donations, one-time gifts and payroll deductions.



I am so grateful for the assistance I received, so I want to help others when they are in need.

—Anonymous Associate, Fridley, MN

I love seeing my fellow coworkers recognized for their hard work and the care they provide our residents.

—Samantha, Cerenity-Marian of St. Paul, MN

FOUNDATION GIVING

Donor Spotlights

The Selfless Generosity of Women Religious

For centuries, Catholic Sisters have been doing the ministry of Jesus by advocating for the poor and bringing peace and justice to the world. Sisters have driven monumental change in health care and education. In so doing they have made our communities kinder, gentler and places for healing. Through their selfless generosity, all our Sisters have made Benedictine and our ministry communities a place where residents enjoy a more purposeful and fulfilling life.

We are profoundly grateful to the Sisters who support our Mission and ministry through prayer and financial support.



Something Beautiful Remains: Margaret B. Nelson

Margaret's life at Benedictine Madonna Towers (Benedictine Living Community-Rochester) was filled with kindness and generosity. She consistently welcomed new residents with her "pie parties" and contributed money to support the residents and associates in her community. When she passed away last year, the loss was felt by everyone. Margaret lived her life in a way that can best be described by the words in her favorite poem:

The tide recedes, but leaves behind bright seashells on the sand. The sun goes down, but gentle warmth still lingers on the land. The music stops, and yet it echoes on in sweet refrains. For every joy that passes, something beautiful remains.

Because Margaret left a very generous bequest in her will to the Benedictine Foundation, her community has what it needs to continue helping residents live with joy and purpose. Now, even in death, something beautiful remains.

FOUNDATION FINANCIALS

TOTAL NET ASSETS

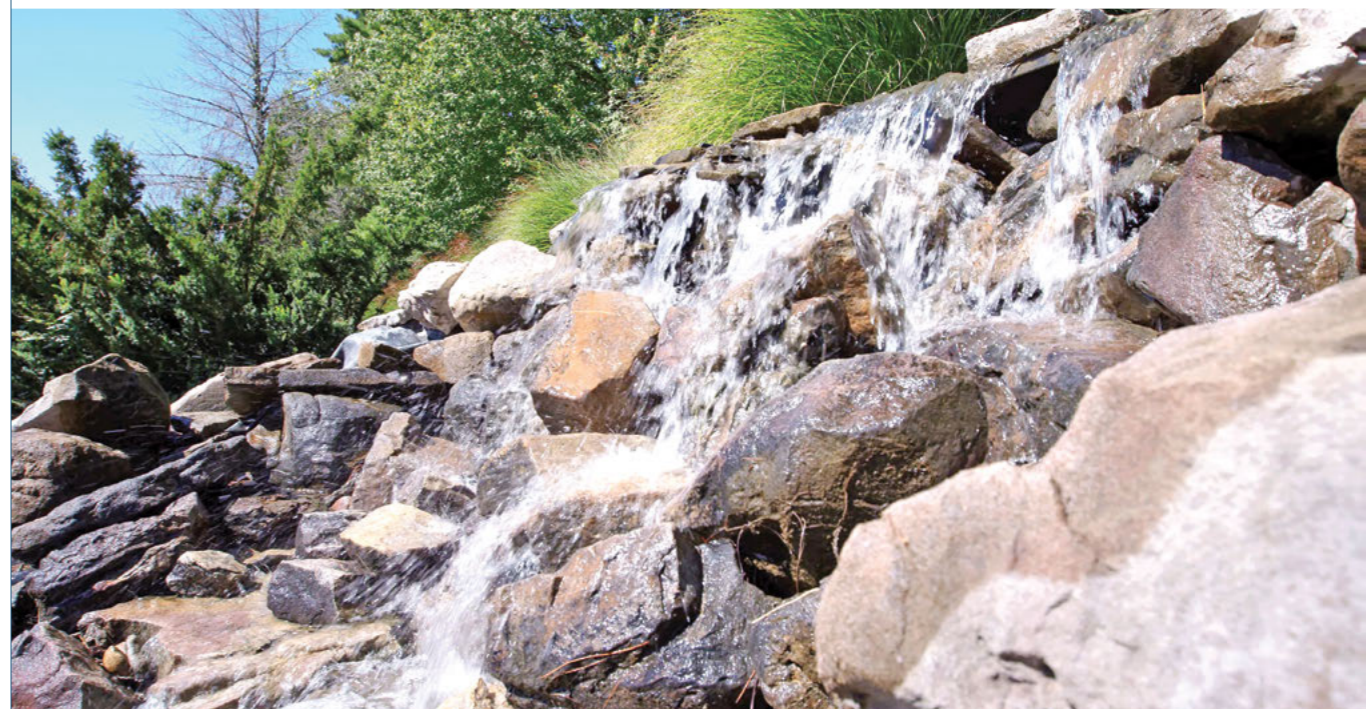
2022 **\$14,853**

2021 \$15,044

2020 \$12,633

Benedictine Foundation only.

Dollar amounts in thousands.



2023 FOUNDATION BOARD OF DIRECTORS

STEPHEN NETT, CHAIRPERSON

KEVIN GREFF, VICE-CHAIRPERSON

MARY TANNER, SECRETARY/PAST CHAIR

LEONARD ESSIG

JUDIE KANTEN

SISTER DORENE KING, O.S.B.

JERRY CARLEY, PRESIDENT/CEO

LAURIE HENNEN, SVP, FOUNDATION/CPO

KEVIN RYMANOWSKI, SVP, FINANCE/CFO





financials

BENEDICTINE CONSOLIDATED STATEMENT OF OPERATIONS

Dollar amounts in thousands.

	2020	2021	2022
Total operating revenue	\$ 286,536	\$ 286,315	\$ 301,087
Total operating expense	272,657	285,084	300,592
Operating income	13,879	1,231	495
Non-operating income	(323)	28,201	(12,759)
Excess of revenue over expense	\$ 13,556	\$ 29,432	\$ (12,264)

SELECTED STATISTICS

Bed complement

Nursing beds	2,107	2,160	2,128
Assisted/independent units	2,136	2,468	2,448
Total beds/units	4,243	4,628	4,576

Utilization

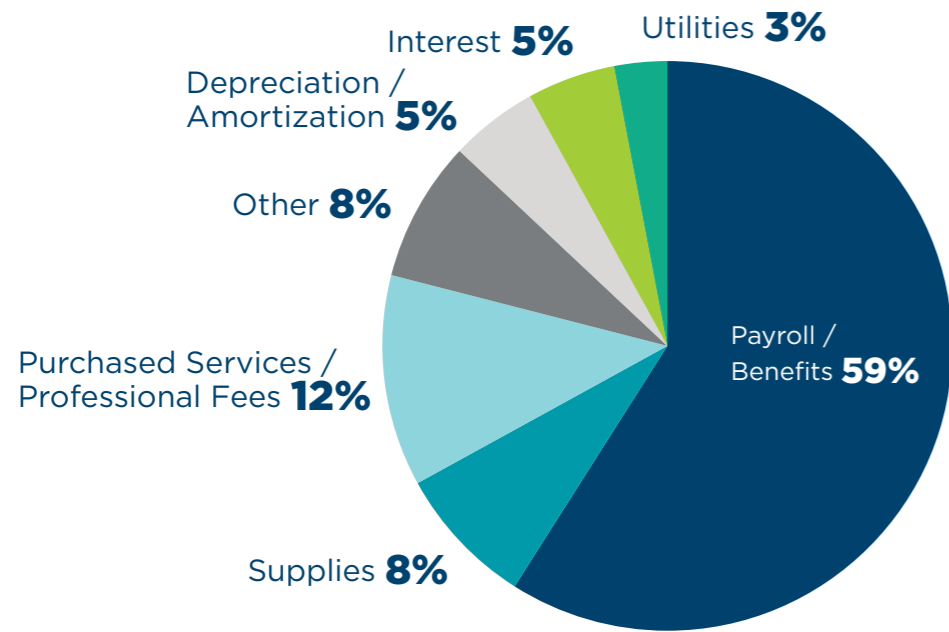
Nursing facility resident days	691,337	618,761	631,462
Assisted/independent days	695,431	716,921	768,355
Total associate full-time equivalents	3,614	3,306	3,087

BENEDICTINE CONSOLIDATED BALANCE SHEET

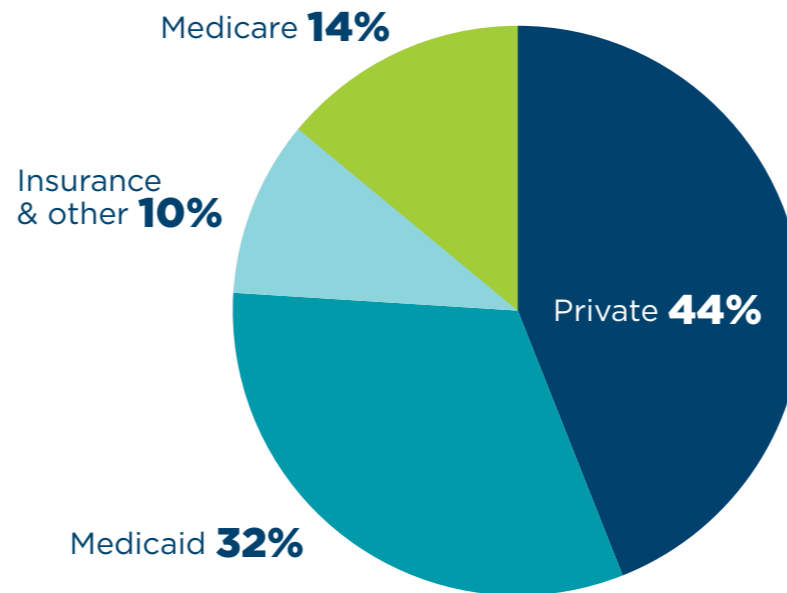
Dollar amounts in thousands.

	2020	2021	2022
ASSETS			
Current assets			
Cash and investments	\$ 86,613	\$ 98,927	\$ 88,476
Accounts receivable	24,572	27,299	29,969
Inventories and prepaid expenses	16,748	18,889	20,178
Total current assets	127,933	145,115	138,623
Assets limited to use	75,392	80,241	83,679
Property and equipment	319,886	328,135	319,770
Other assets	4,612	3,905	30,223
Total assets	527,823	557,396	\$572,295
LIABILITIES & NET ASSETS			
Current liabilities			
Accounts payable and accruals	\$ 38,131	\$ 37,035	\$ 30,127
Current portion long-term debt	12,388	39,339	32,318
Total current liabilities	50,519	76,374	62,445
Other liabilities	36,325	36,139	59,390
Long-term debt	298,027	269,342	285,965
Net assets	142,952	175,541	164,495
Total liabilities and net assets	527,823	557,396	\$572,295

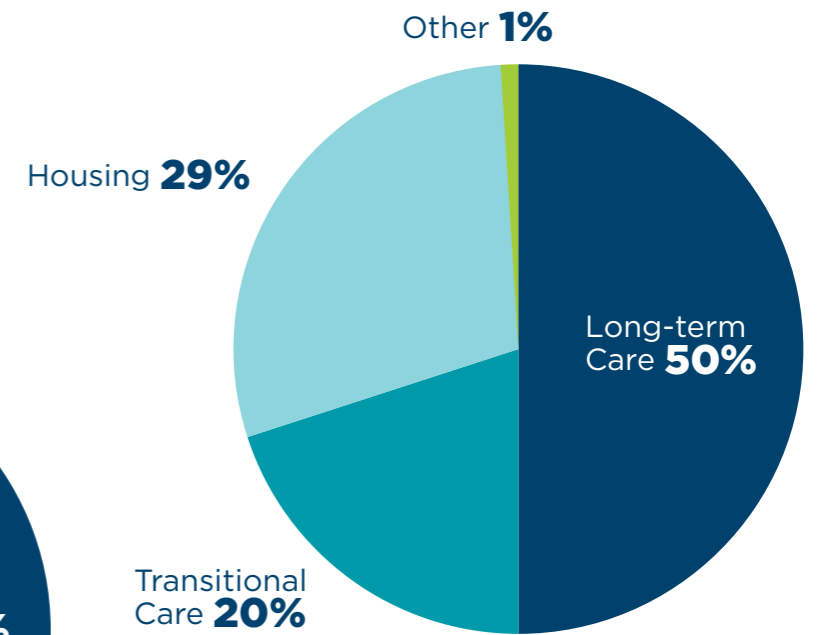
REVENUE AND EXPENSES



Expenses by Type

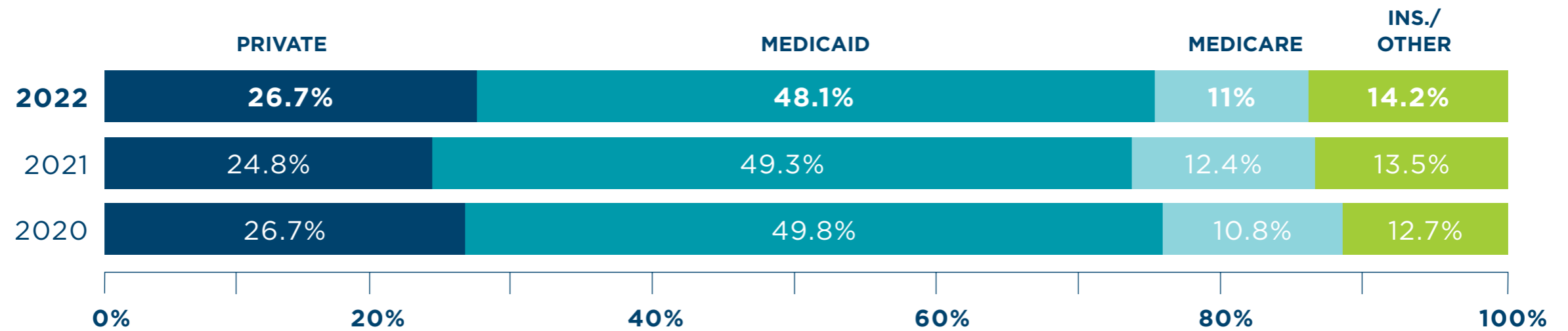


Revenue by Payor



Revenue by Service Type

BENEDICTINE NURSING COMMUNITY CENSUS DAYS





our system

2022 BENEDICTINE LIVING COMMUNITIES

Minnesota

Benedictine Living Community-Ada

- + Benedictine Care Community
- + Benedictine Mission Court
- + Benedictine Supportive Services

Benedictine Living Community-Anoka

Benedictine Living Community-Byron

Benedictine Living Community-Crookston

- + Benedictine The Summit
- + Benedictine Villa St. Vincent

Benedictine Living Community-Duluth

- + Benedictine Adult Day
- + Benedictine Care Community
- + Benedictine Home Health
- + Benedictine Marywood
- + Benedictine Westwood
- + Benedictine Westwood Terrace

Benedictine Living Community-Minneapolis

Benedictine Living Community-New Brighton

Benedictine Living Community-Northfield

Benedictine Living Community-Osseo

Benedictine Living Community-Owatonna

Benedictine Living Community-Red Wing

- + Benedictine St. Crispin
- + Benedictine The Villa

Benedictine Living Community-Regina, Hastings

- + Benedictine Assisted Living
- + Benedictine Care Community

Benedictine Living Community-Rochester

- + Benedictine Madonna Meadows
- + Benedictine Madonna Towers

2022 BENEDICTINE LIVING COMMUNITIES

Benedictine Living Community-St. Peter

- + Benedictine Care Community
- + Benedictine Court
- + Benedictine Heritage Meadows

Benedictine Living Community-Shakopee

- + Benedictine The Gardens
- + Benedictine St. Gertrude's
- + Benedictine Windermere Way

Benedictine Living Community-Winona

- + Benedictine Adult Day
- + Benedictine Callista Court
- + Benedictine Saint Anne
- + Benedictine Saint Anne Training Center

Cerenity Senior Care-Humboldt, St. Paul

- + Cerenity Care Center
- + Cerenity Residence

Cerenity Senior Care-Marian of St. Paul

- + Cerenity Care Center
- + Cerenity Residence

Cerenity Senior Care-White Bear Lake

- + Cerenity Care Center
- + Cerenity Residence

Illinois

Benedictine Living Community-At The Shrine, Belleville

- + Benedictine Dammert Center
- + Benedictine Our Lady of the Snows
- + Benedictine St. Francis

Villa St. Benedict, Lisle

- + Benedale Center
- + Villa Center Apartments
- + Villa Homes

2022 BENEDICTINE LIVING COMMUNITIES

Missouri

Benedictine Living Community-St. Joseph

Nazareth Living Center, St. Louis

- + McGovern Commons
- + St. Joseph Manor
- + Carondelet Manor
- + The Village at Nazareth

North Dakota

Benedictine Living Community-Bismarck

- + Benedictine St. Gabriel's
- + Benedictine Basic Care
- + Benedictine Assisted Living

Benedictine Living Community-Dickinson

- + Benedictine Care Community
- + Benedict Court

Benedictine Living Community-Ellendale

- + Benedictine Evergreen Place

Benedictine Living Community-Garrison

- + Benedictine Care Community
- + Benedictine The Meadows

Benedictine Living Community-LaMoure

- + Benedictine Rosewood Court
- + Benedictine St. Rose

Benedictine Living Community-Wahpeton

- + Benedictine Home Health Care
- + Benedictine St. Catherine's
- + Benedictine Siena Court

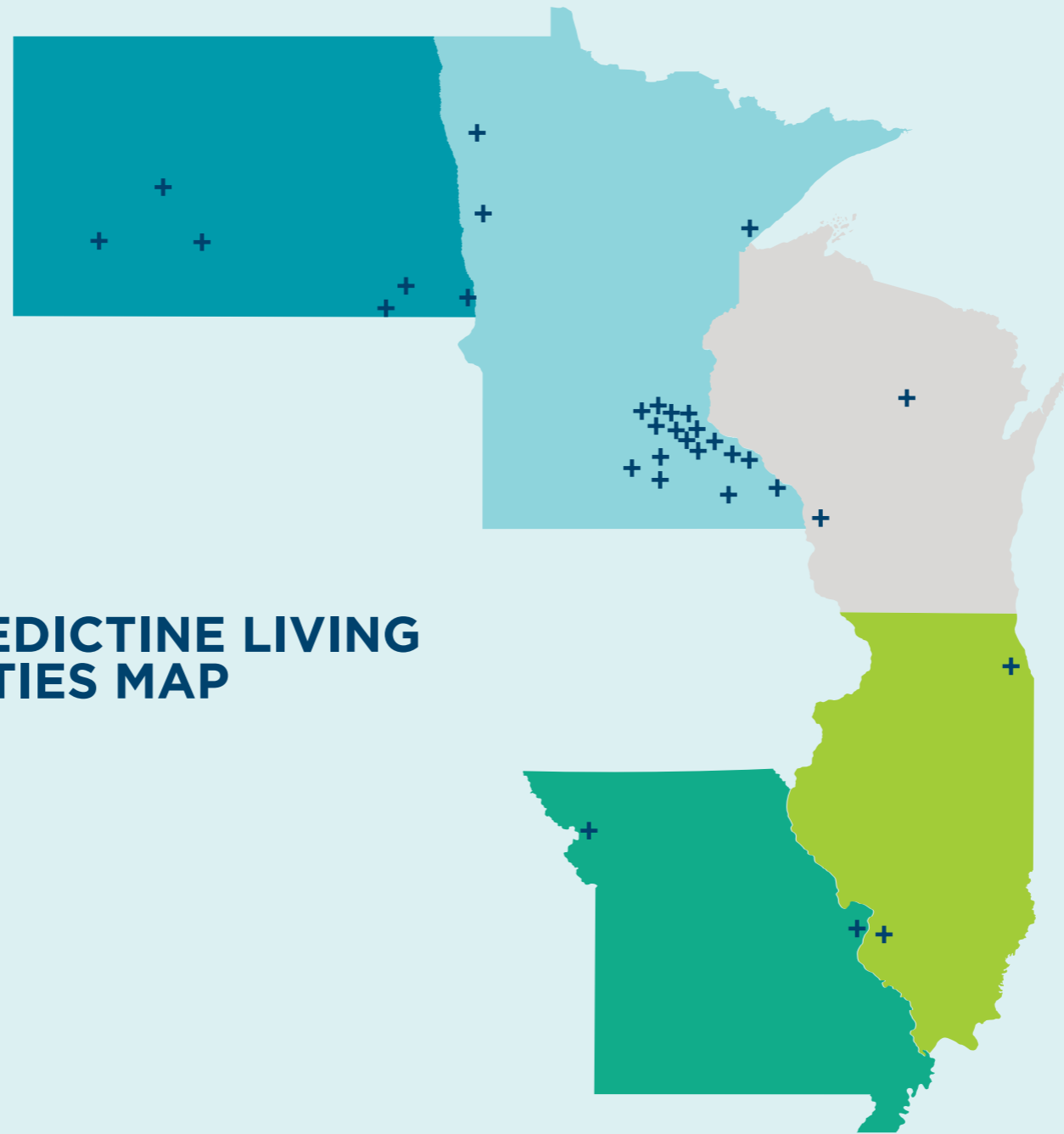
Wisconsin

Benedictine Living Community-La Crosse

- + Benedictine Manor
- + Benedictine Villa

Benedictine Living Community-Wausau

2022 BENEDICTINE LIVING COMMUNITIES MAP



Mission

Benedictine is a Catholic, faith-based organization entrusted with advancing the life-enhancing senior care ministry of the Benedictine Sisters of Duluth, Minnesota. We witness to God's love by creating inclusive communities, supporting those we serve to live well and with purpose, with special concern for the underserved.

Vision

We create Benedictine Living Communities where health, wellness and choice come to life.

Core values

Hospitality | Stewardship | Respect | Justice

2023

BOARD OF DIRECTORS

JEFFREY GARLAND, MD, CHAIRPERSON

PAUL HASKINS, VICE-CHAIRPERSON

SISTER DANILE LYNCH, OSB, SECRETARY

CARRIE SHAW

DAVID HOEL

DAVID MARC, PH.D.

DEAN AGER

JAY STERNS

JENNY PETERSON

PAUL GRIZZELL

SISTER BEVERLY RAWAY, OSB

SISTER CLARE MARIE TRETTEL, OSB

EX-OFFICIO: JERRY CARLEY, PRESIDENT/CEO



Benedictine

LIVING FULLY | LIVING WELL

6499 UNIVERSITY AVENUE NE, STE 300
MINNEAPOLIS, MINN. 55432

4560 NORWAY PINES PL.
HERMANTOWN, MINN. 55811

©BENEDICTINE 2023

