

The Village at Nazareth  
3 Nazareth Lane  
St. Louis MO 63129  
Phone: 314-894-1000  
Fax: 314-894-1008  
E-mail:  
michelle.nail@benedictineliving.org

We're on the Web! Please visit our website for campus news and pictures.

You can also view and print out our full activities calendar.

[Nazarethlivingcenter.org](http://Nazarethlivingcenter.org)

Also, don't forget to visit our Facebook page!

[www.facebook.com/nazarethlivingcenter.org](http://www.facebook.com/nazarethlivingcenter.org)

# Music Word Search



BAND  
CHORUS  
CONDUCTOR  
HARMONY  
MELODY  
NOTE  
PITCH  
SONG  
TEMPO

BASS  
CLEF  
CRESCENDO  
HIGH  
MINOR  
ORCHESTRA  
PLAY  
STAFF  
TREBLE

BEAT  
COMPOSER  
GUITAR  
KEY  
MUSIC  
PIANO  
RHYTHM  
SYMPHONY  
VERSE



THE Village  
AT NAZARETH

June 2026

Volume 1 Issue 6

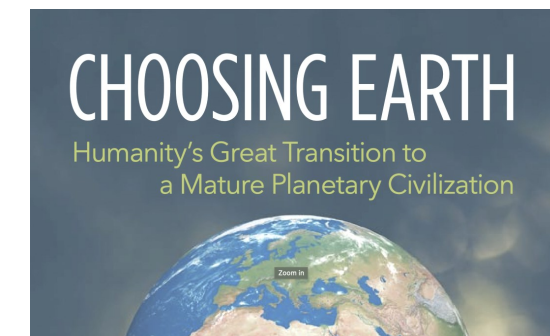
Documentary Film: Friday, June 19th at 2:00  
Activity Room



**Choosing Earth: Choosing Life** is a 63-minute documentary that explores the speed, depth and magnitude of our growing planetary crisis, and the opportunity we have to meet this crisis consciously – with eyes and hearts wide open. Through a broad, whole-systems perspective, the film examines key challenges (climate change, inequities, species extinction, overconsumption, and more) and explores the deeper transformation being called forth from humanity. Woven throughout are stories from around the world illustrating both heart-breaking impacts and inspiring resilience. Engaging with this paradox — an unfolding global crisis paired with the opportunity to awaken to and serve the well-being of all of life — is the work of our lifetimes.

You don't want to miss this interesting and educational film.

Come and see what you can learn!



THE VILLAGE AT NAZARETH

VILLAGE VOICE



- 2nd Chris Page
- 4th Lorraine McDougall
- 5th Sr. Helen Louise Williams
- 10th Al Skubic
- 11th Don Amsler
- 13th JoAnn Laaker
- 21st Sr. Eleanor O'Hearn
- 21st Mary Roth
- 25th Sr. Pat Giljum
- 27th Helena Sinak
- 30th Mary Sinak

**HAPPY ANNIVERSARY**

- 7th Tom & Joann Mudd
- 11th Jim & Lorreta Lampen
- 19th Bob & Donna Atwood



**Alzheimer's Caregiver Support**

Caring for someone with dementia is a unique experience. No one knows what it is like except others who are in the same shoes. The Alzheimer's Association provides monthly support groups to bring caregivers – spouses, siblings, children, guardians – together for understanding, empathy, resources, humor and hope. Groups are peer-led by facilitators trained by the Alzheimer's Association Alzheimer's Caregiver Support.

The group will meet on the 3rd Tuesday of every month at Carondelet Manor in the 1st floor Private Dining Room from 1:00 - 2:30. The Private Dining Room is located in Carondelet Manor behind the receptionist desk.

**Resident Meeting**

Wednesday, June 10th  
at 2:00 pm.

\*\*\*\*\*

**Food Meeting**

Wednesday, June 17th  
at 2:00 pm.

On Tuesday, June 9th, Bingo will be sponsored by HomeWell Care Services. Come and enjoy a afternoon of fun and some great prizes.



Hillary from the St. Louis County Library will be here on **Monday, June 1st at 2:00** in the Private Dining Room.

Come and enjoy the presentation!

"Literary St. Louis"

Discover many books set in and about St. Louis and the real historical events that inspired them. With everything from cardinals baseball to secret adoption, you'll see a different side of the city.

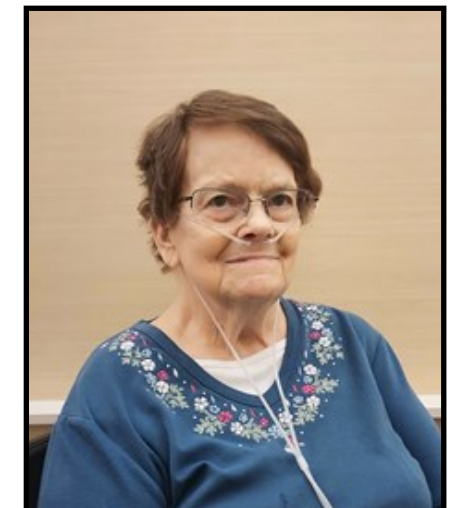


This months Senior Fit Presentation:  
**"Muscles Matter: Fit for Function"**

**Friday, June 26th**

**10:00 a.m.**

**Private Dining Room**



Dee Ryan moved into apartment 240 on May 8th.

Welcome to The Village at Nazareth Dee!



**It's Picnic Time!**

**Thursday, June 4th**

The bus will leave at 10:30 for a picnic at Cliff Cave Park. The Village will provide all of the food and drinks. The cost is \$8.00 per person. We will have plenty of soda, water, sub sandwiches, chips, coleslaw, potato salad and cookies.

At Cliff Cave Park, there are plenty of picnic tables located under the pavilion and the facilities are very close and handicapped accessible. You can take a walk on the path ways, play some games or just sit and watch the barges go by.

If you'd like to join in on the fun, sign up in the Activity Book **NO LATER than Monday, June 1st.** You may also turn your money in at the same time.

This sign up sheet is currently in the Activity sign up book.